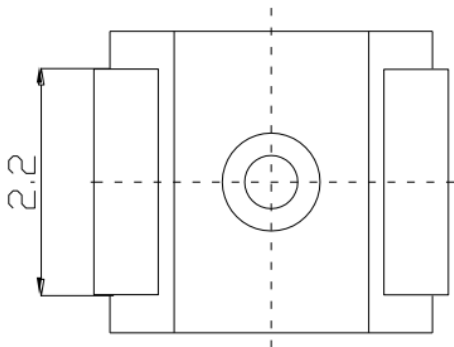
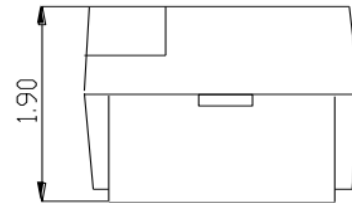
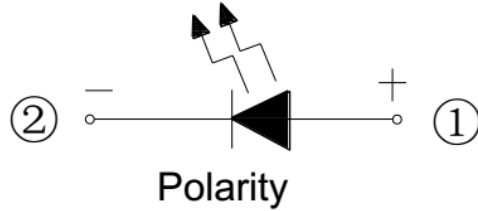
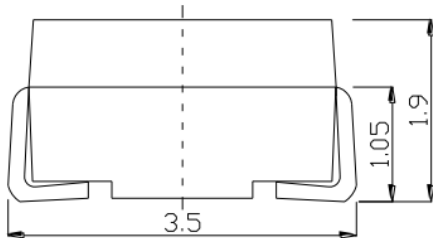
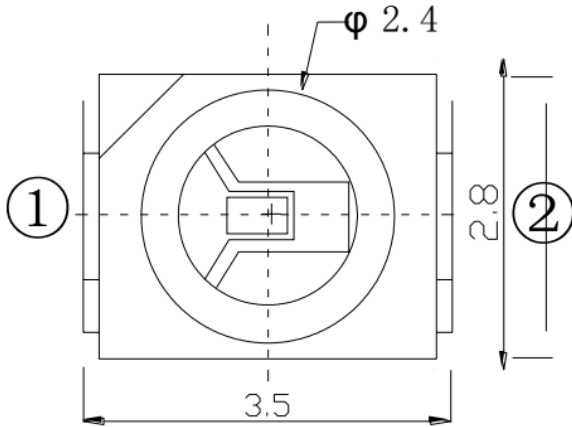
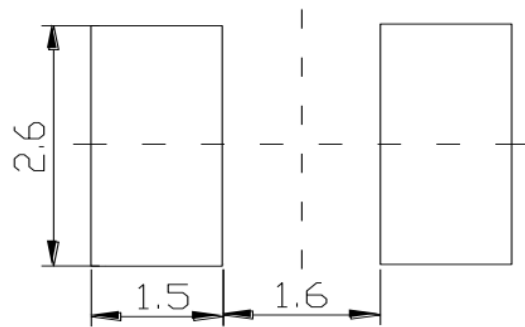


**Description: Flat LED**

**Package Dimensions:**



**Soldering PAD Suggested:**



<b>Material</b>	<b>Color</b>
InGaN	Blue

**Remarks:**

1. All Dimensions are in millimeters
2. Tolerance of + or - 0.25mm 0.010 in. (unless otherwise noted)

**Absolute Maximum Rating Value Temperature at 25°C**

Parameters	Maximum Rating	Unit
<b>Power</b>	60	mW
<b>Pulse Forward Current</b>	50	mA
<b>Forward Current</b>	20	mA
<b>Reverse Voltage</b>	5	V

**Optical Parameters Temperature at 25°C**

Parameter	Symbols	Min.	Typ.	Max.	Units	Test Condition
<b>Luminous Flux</b>	$\Phi$	--	--	--	lm	IF=20mA
<b>Luminous Intensity</b>	Iv	800	--	1000	mcd	IF=20mA
<b>Viewing Angle</b>	2 $\theta$ 1/2	--	120	--	deg	IF=20mA
<b>Chromaticity Coordinates</b>	X	--	--	--	--	IF=20mA
	Y	--	--	--	--	IF=20mA
<b>Color Wave</b>	Tc	460	463	465	nm	IF=20mA
<b>Color Rendering Index</b>	CRI	--	--	--	Ra	IF=20mA
<b>Forward Voltage</b>	VF	2.8	--	3.6	V	IF=20mA
<b>Reverse Current</b>	IR	--	--	10	uA	VR=5V

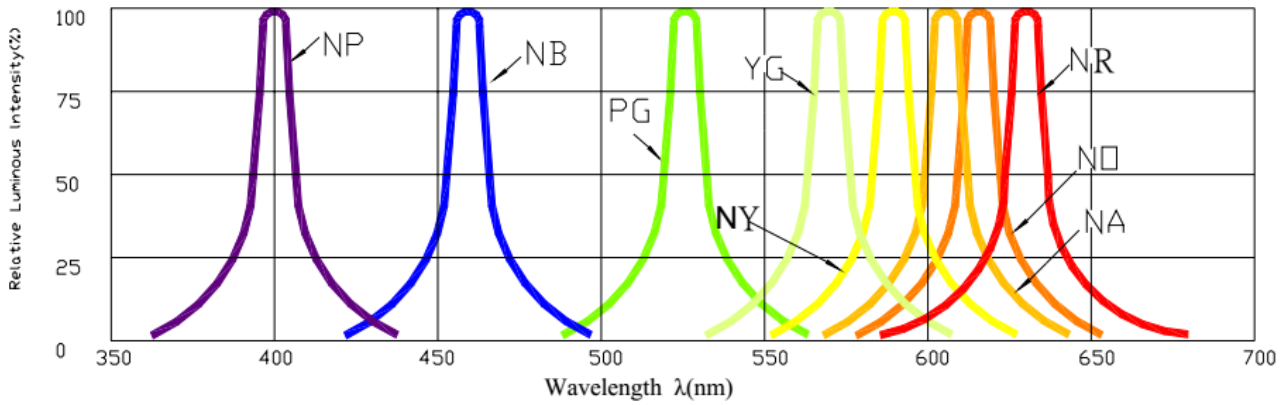
## Remarks:

1. Light-emitting brightness is according to human eye simulation of the induction curve of luminous intensity in line with the CIE (International Light Committee Organization).
2. 1/2 angle is from optical centerline at the luminous intensity is 1/2 the optical centerline value.
3. Brightness tolerance is guaranteed within plus or minus 10%.

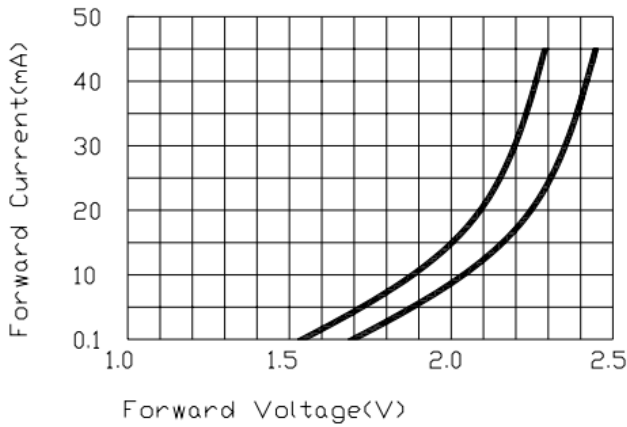
**Typical Electrical and Perspective Curve**

Unless Otherwise Specified, Ambient Temperature is 25°C

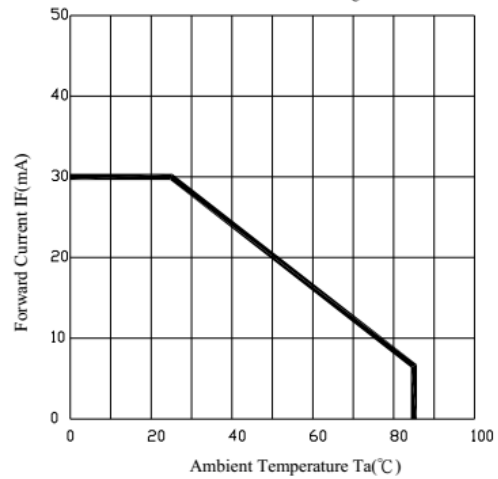
Spectrum Distribution



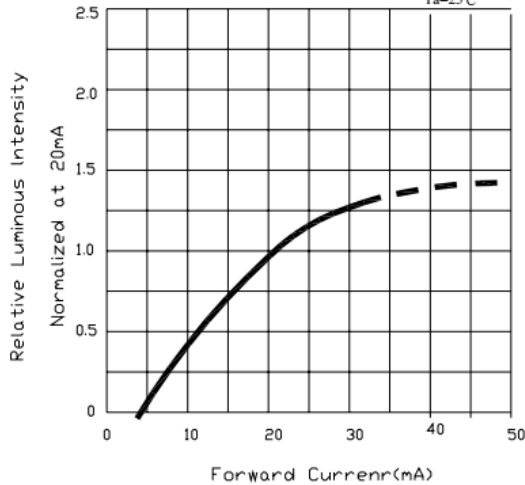
Forward Current Vs. Forward Voltage  
Ta=25°C



Forward Current Derating Curve



Luminous Intensity Vs. Forward Current  
Ta=25°C



Radiation Diagram

